

GENERAL NOTES

"All existing and removal to be carefully undertaken in accordance with Conservation Specifications by David Statter Conservation Architects."

"Surviving original multi-pane sash windows to link building to be carefully conserved, retaining single panes of glass in accordance with Conservation Specifications by David Statter Conservation Architects."

"Non-original 20th Century sash windows to Seminary to be spliced where beads and half cills are damaged. New sash windows to be fitted into existing sashes. All in accordance with detail drawings showing glazing bar profile impact and Conservation Specifications by David Statter Conservation Architects."

"All services to Seminary to reuse existing routes where possible with any new routes and installations to be carried out in accordance with Conservation Specifications by David Statter Conservation Architects."

"Minor repairs to leaded and stained glass in Assembly Hall are limited to repair of opening sections and glass replacement where panes are broken. No storm or secondary glazing proposed. All to be carried out in accordance with Conservation Specifications by David Statter Conservation Architects."

"Stained glass over front entrance to chapel is set in a timber frame and is to be carefully removed to agreed location in accordance with Conservation Specifications by David Statter Conservation Architects."

"Slate roofs to Seminary and Chapel to be restored using Blue Bangor slate and stepped lead valleys in accordance with Conservation Specifications by David Statter Conservation Architects."

"All cast-iron rainwater goods to be retained and renewed with any replacements where goods are beyond repair to be in cast iron. All in accordance with Conservation Specifications by David Statter Conservation Architects."

"Roofs to be lightly cleaned with dilute biocide in accordance with Conservation Specifications by David Statter Conservation Architects."

"Limestone strings and cills to be carefully cleaned using Doff or similar steam cleaning - no abrasive or chemical cleaning. All in accordance with Conservation Specifications by David Statter Conservation Architects."

"Granite cills, cappings etc to be carefully cleaned using a light calcium carbonate abrasive in accordance with Conservation Specifications by David Statter Conservation Architects."

"Wholesale repointing is not required and localised pointing where necessary will be carried out using a fine (M6.3) mortar and aggregate and lime mix to match existing bedding mortar tone and texture. All in accordance with Conservation Specifications by David Statter Conservation Architects."

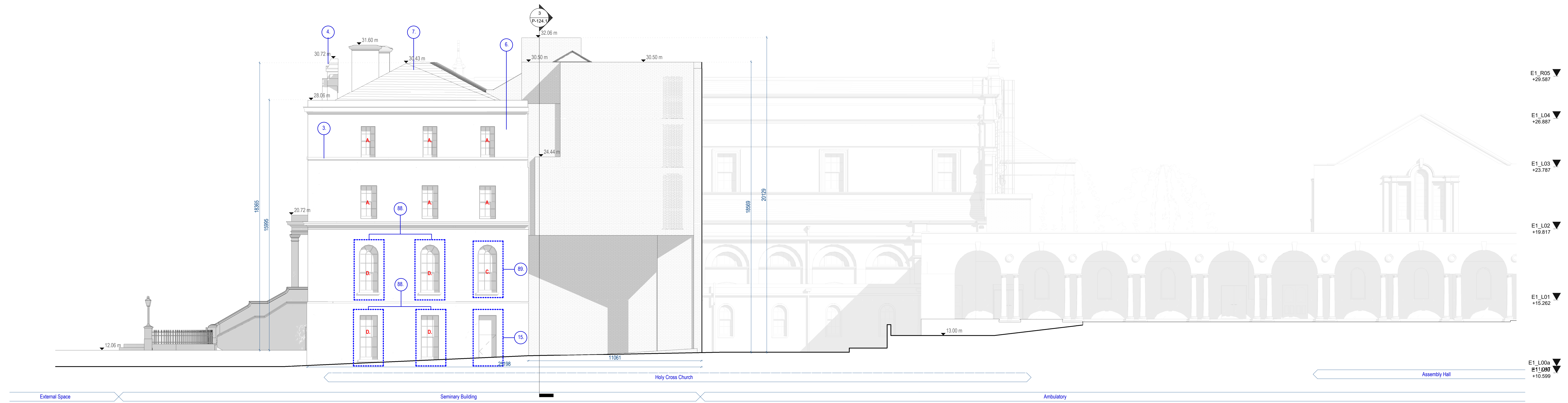
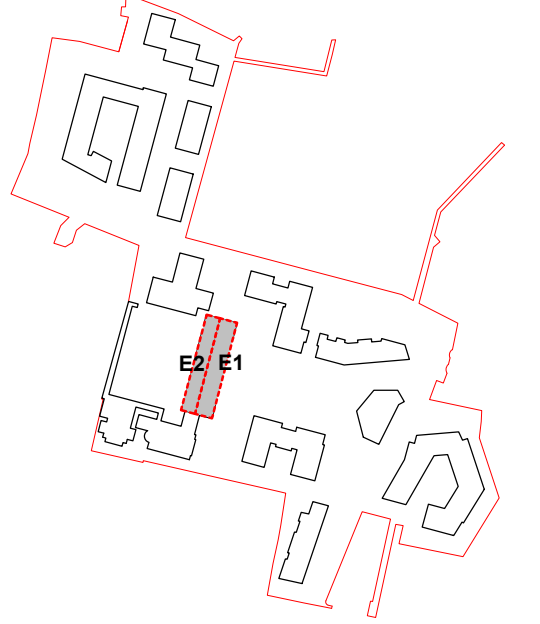
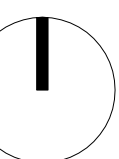
KEY - WINDOWS

- A. EXISTING WINDOW RETAINED
- B. EXISTING WINDOW REMOVED
- C. EXISTING WINDOW REPLACED
- D. NEW WINDOW

ALL DIMENSIONS TO BE CHECKED ON SITE
NO DIMENSIONS TO BE SCALED FROM THIS DRAWING
DRAWINGS TO BE READ IN CONJUNCTION WITH RELEVANT CONSULTANTS DRAWINGS

A0

N



1 North Elevation-Planning
Scale: 1:100

- E1_R05 ▼ +29.587
- E1_L04 ▼ +26.867
- E1_L03 ▼ +23.787
- E1_L02 ▼ +19.817
- E1_L01 ▼ +15.262
- E1_L00a ▼ +10.599

REV	DATE	DESCRIPTION	CHK	DRN
P2	APR/21	Issued for Planning		SP
P1	NOV/20	Issued for Pre-Application Consultation		IB

STATUS CODE DESCRIPTION
ISSUED FOR PLANNING APPROVAL

APPLICANT NAME
CWTC Multi Family ICAV acting on behalf of its sub-kind DBTR DR1 Fund

PROJECT NAME
Holy Cross College, Carriffe Road, Dublin 3 and Drumcondra Road Lower, Drumcondra, Dublin 9

LOCATION
Holy Cross College, Carriffe Road, Dublin 3 and Drumcondra Road Lower, Drumcondra, Dublin 9

DRAWING
Seminary Building - Proposed North Elevation

PROJECT NUMBER	DATE
CLN-MCM-00-ZZ-MS-A-0003	06/02/20

SCALE @ A0	DRAWN/CHECKED
As indicated	IB / ROC

STATUS CODE	DRAWING NUMBER	REVISION
A1	CLN-MCM-E1-ZZ-DR-A-P-113	P2

Henry J Lyons
Architecture + Interiors
henryjlyons.com



O'Donnell+Tuomey

mcculloughmulvinarchitects

NMP
Niall Manning-Jones + Partners

o mahony pike

BM
BARRETT MANDRY

